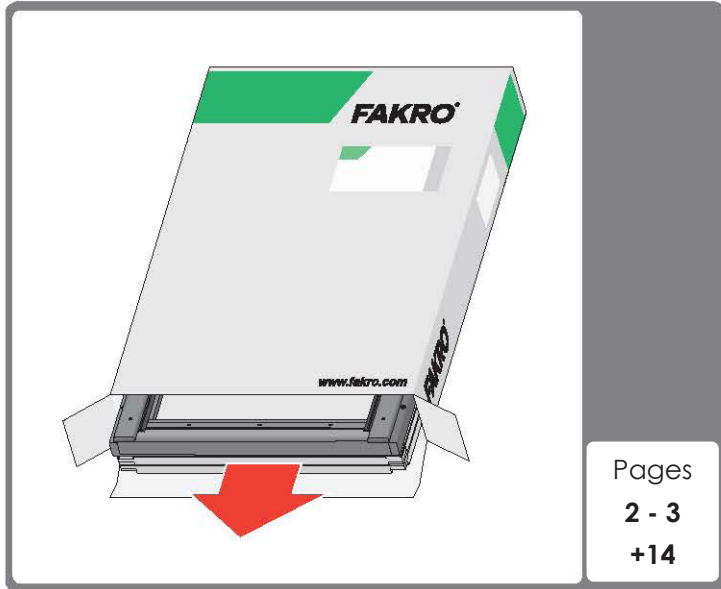
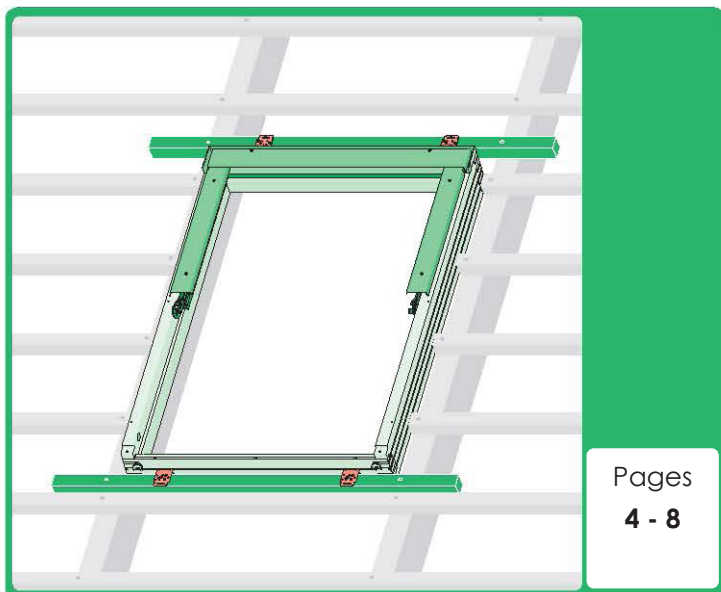




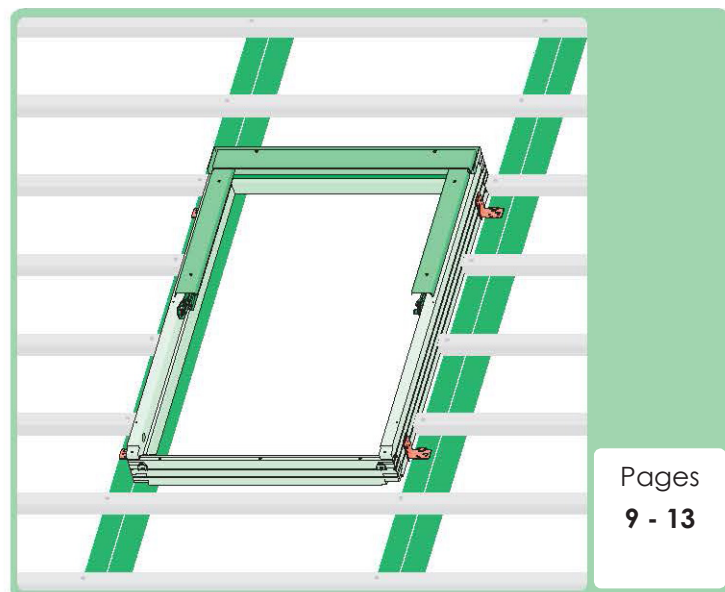
# FSR

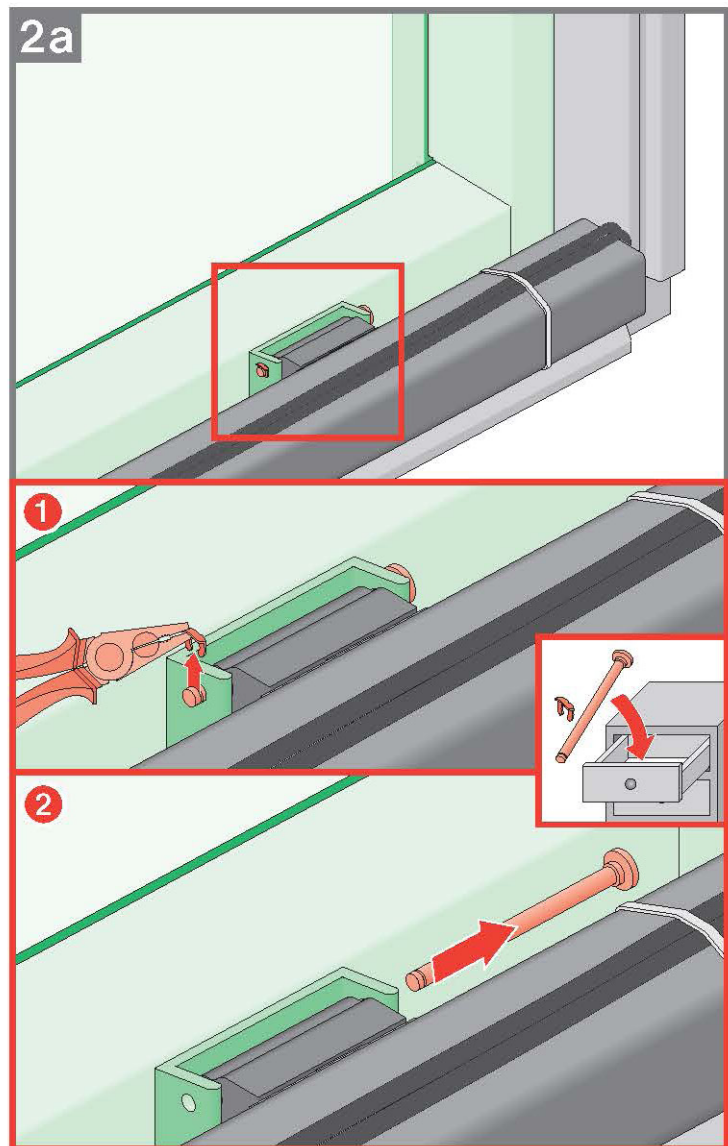
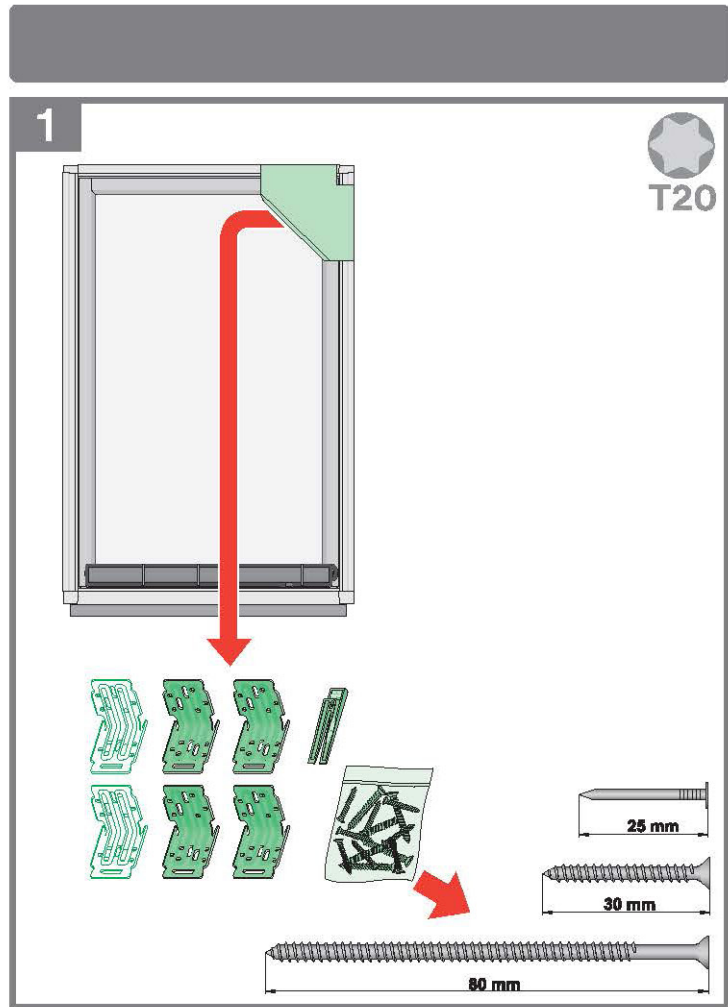
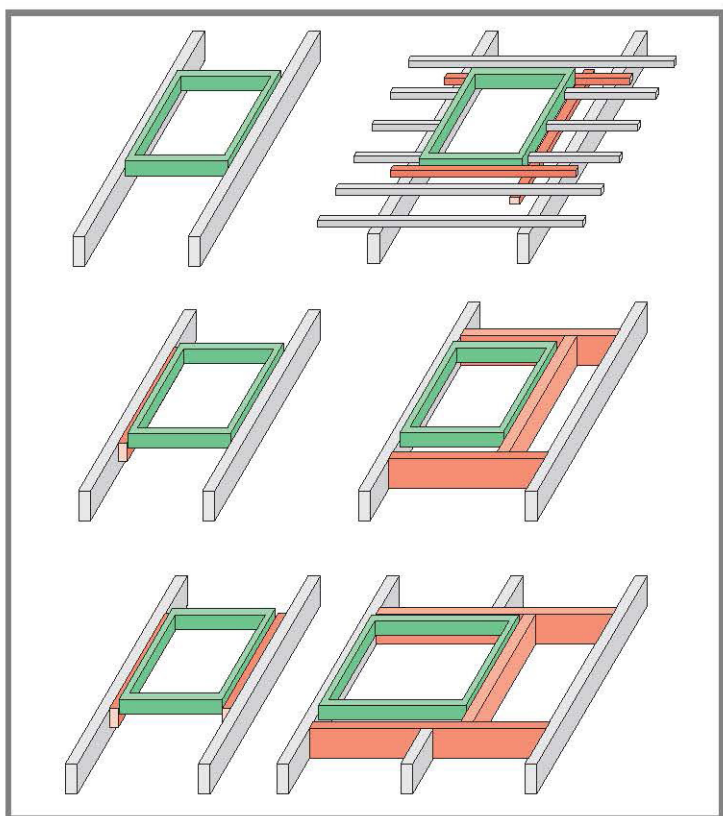
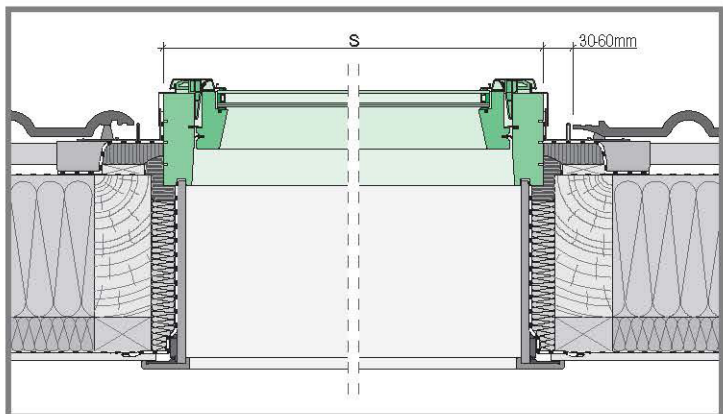
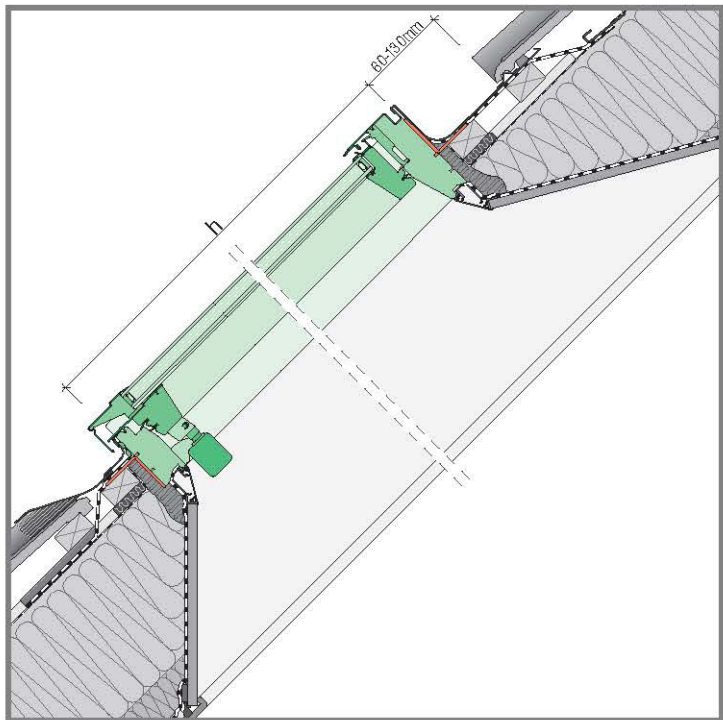


Either

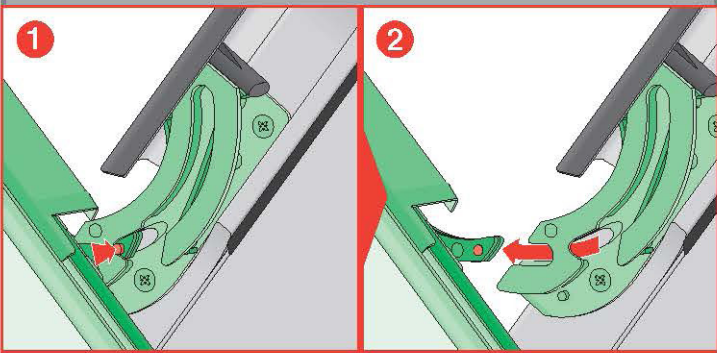
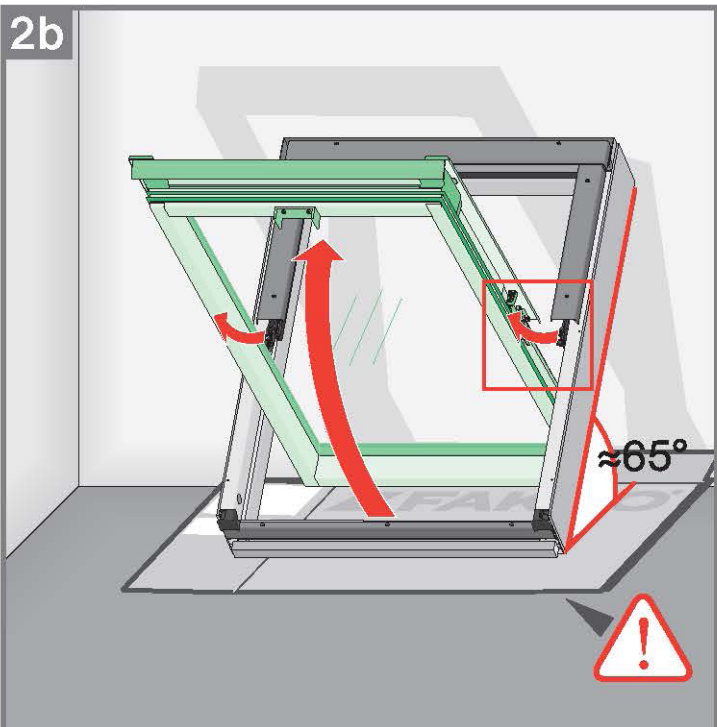


Or

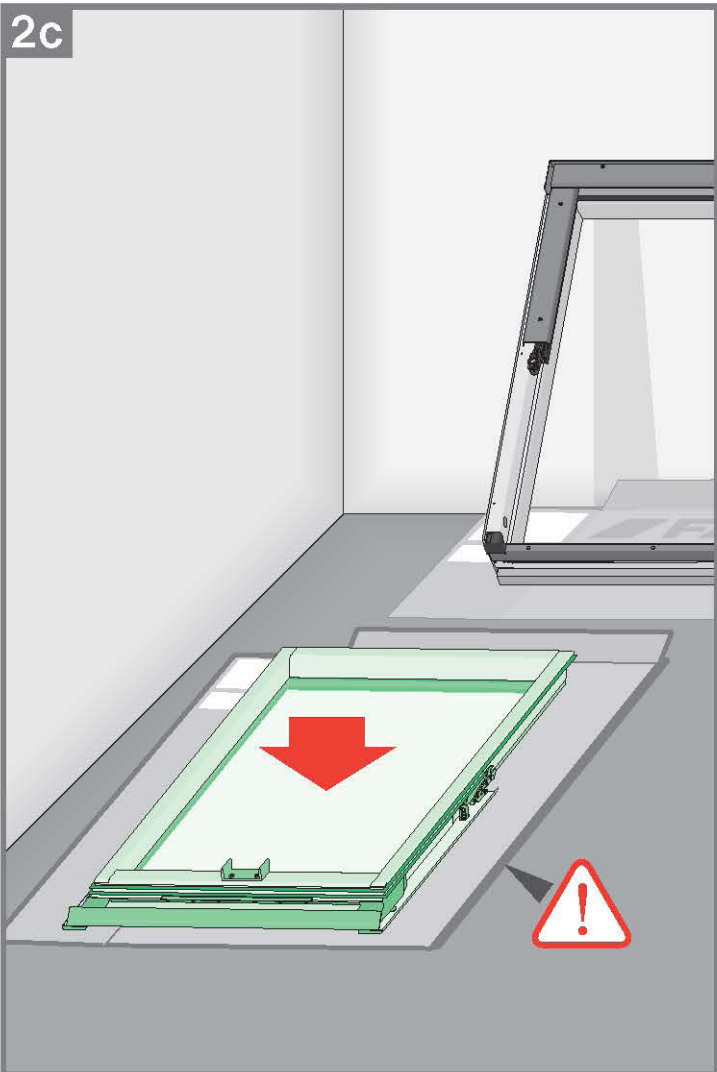




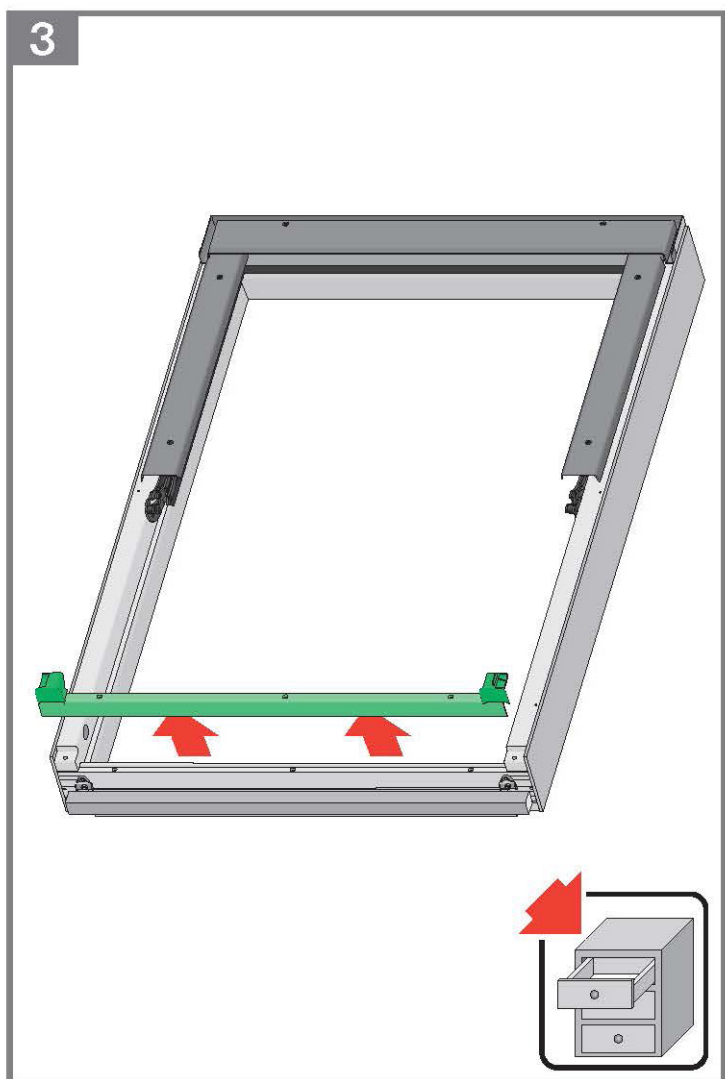
2b



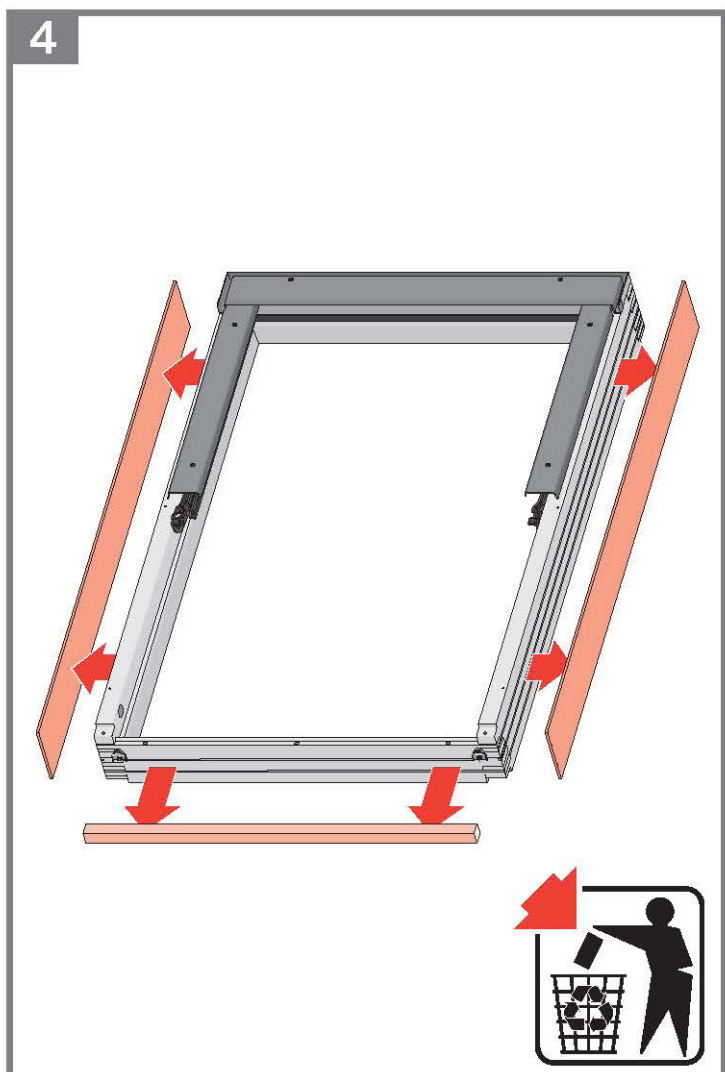
2c

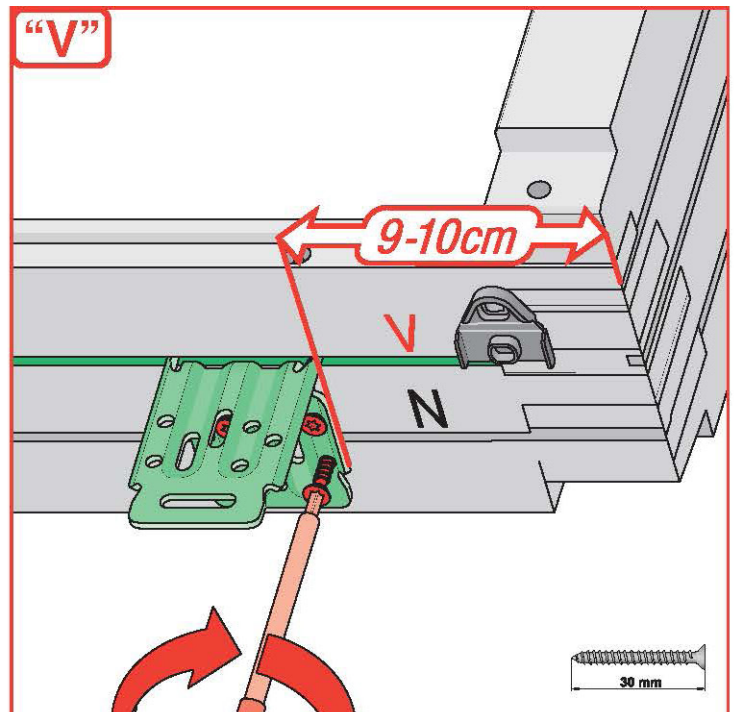
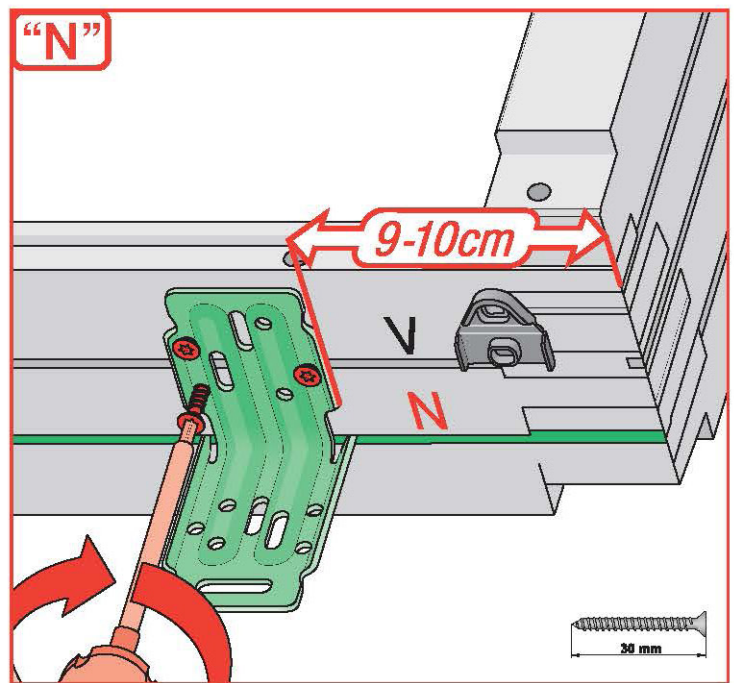
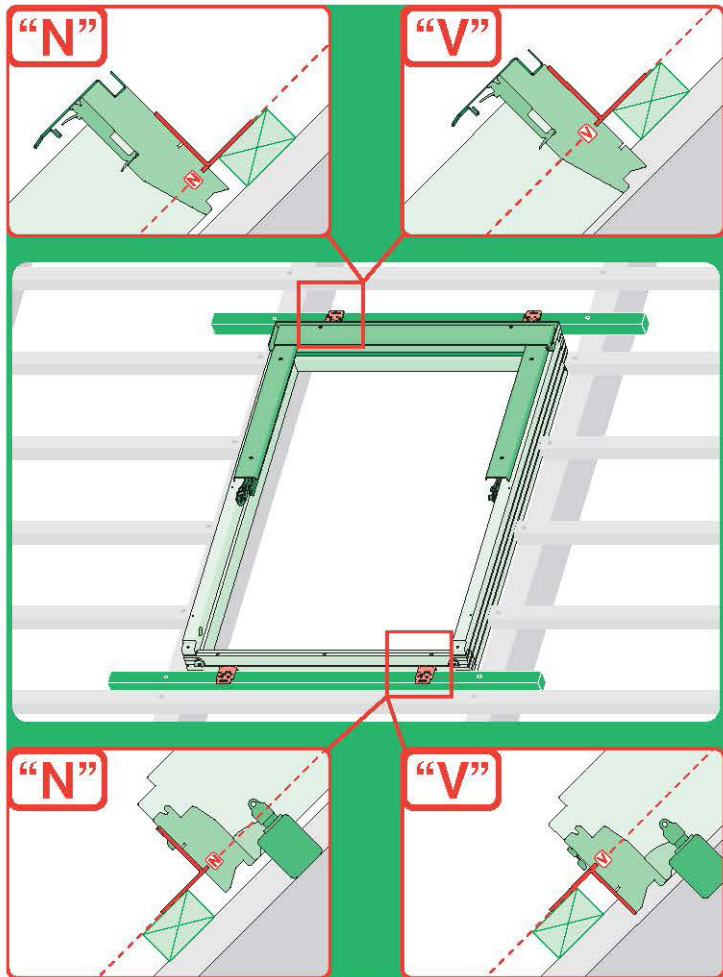


3



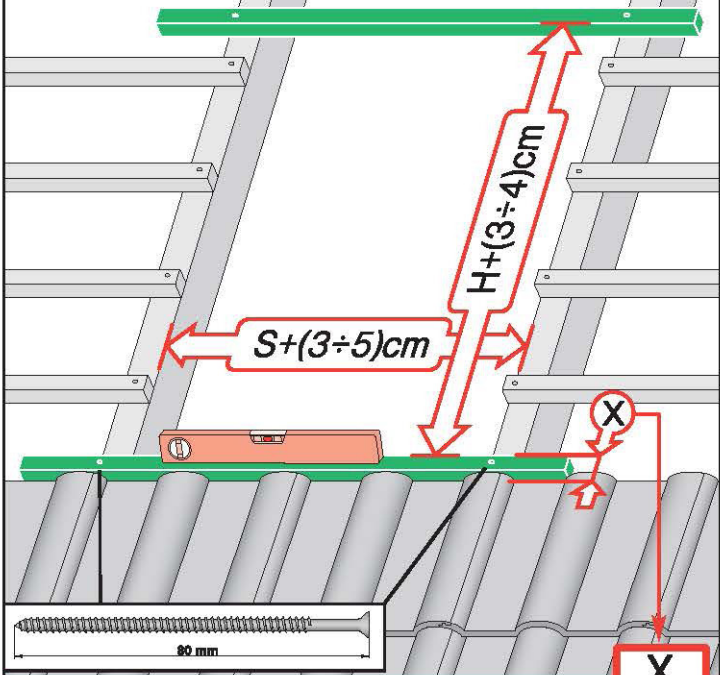
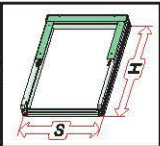
4





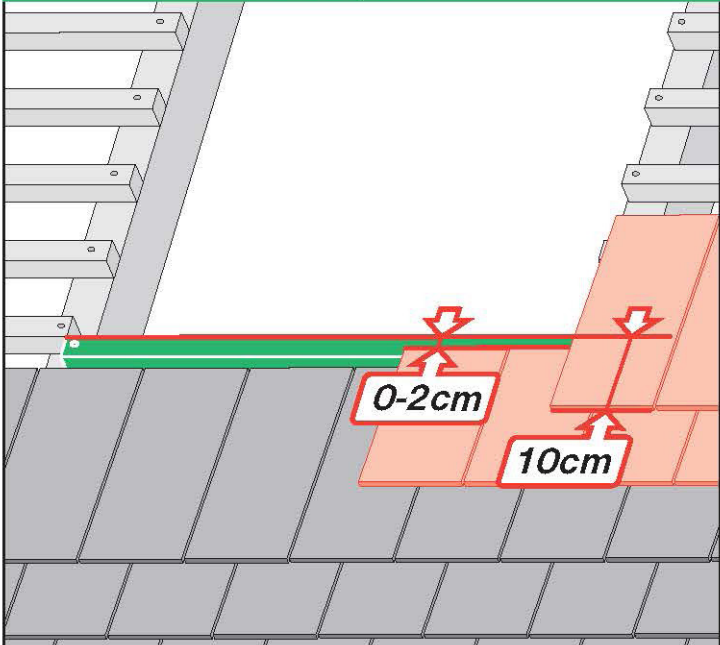
	max 90mm	EHN		
		EHV		
		-	-	-
	max 45mm	EZN		
		EZV		
		-	-	-
	max 15mm (N) max 5mm (V)	ELN		
		ELV		
		-	-	-
	max 5mm	ESN		
		ESV		
		-	-	-

2

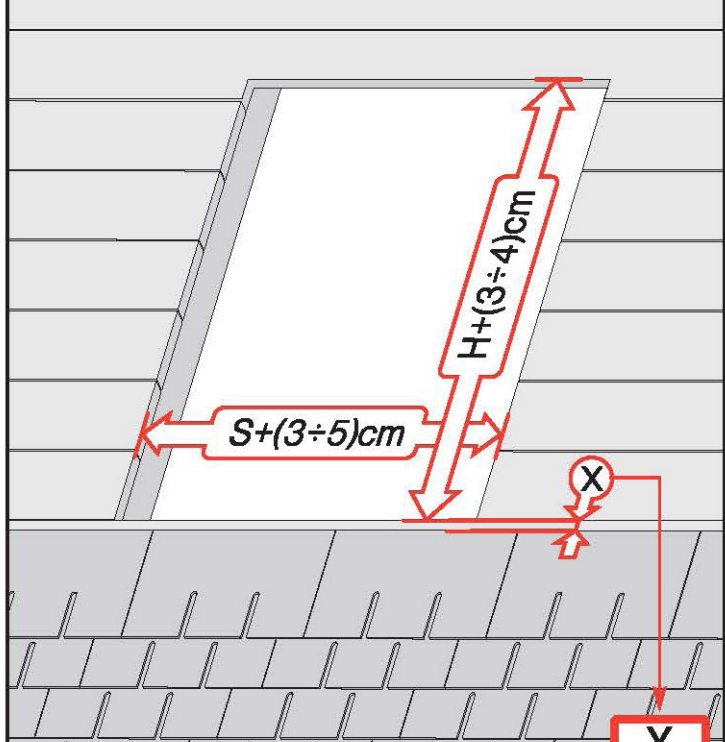
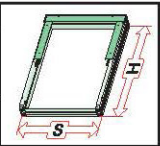


	max 90mm	EHN	7-10cm
		EHV	7-10cm
	max 45mm	EZN	6-8cm
		EZV	6-8cm
	380-420mm, 12-16mm	EGV	6cm
	380-420mm, 12-16mm	EPV	6cm
	max 5mm (V), max 15mm (N)	ELN	0-2cm
		ELV	0-2cm
		EEN	0-2cm
		EEV	0-2cm

**ELN, ELV**

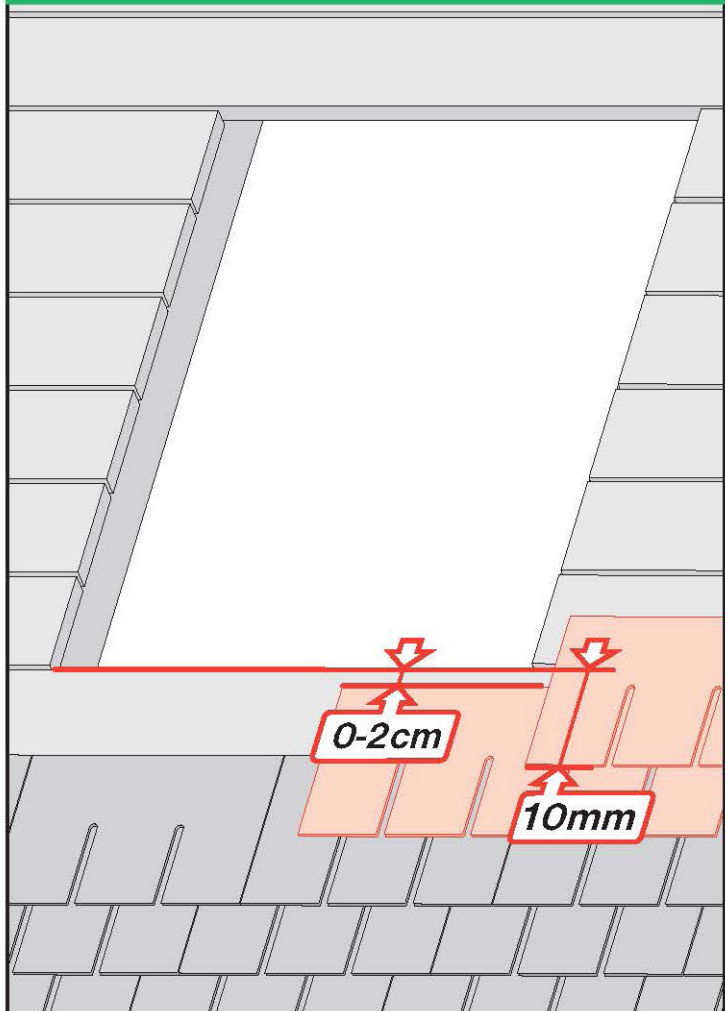


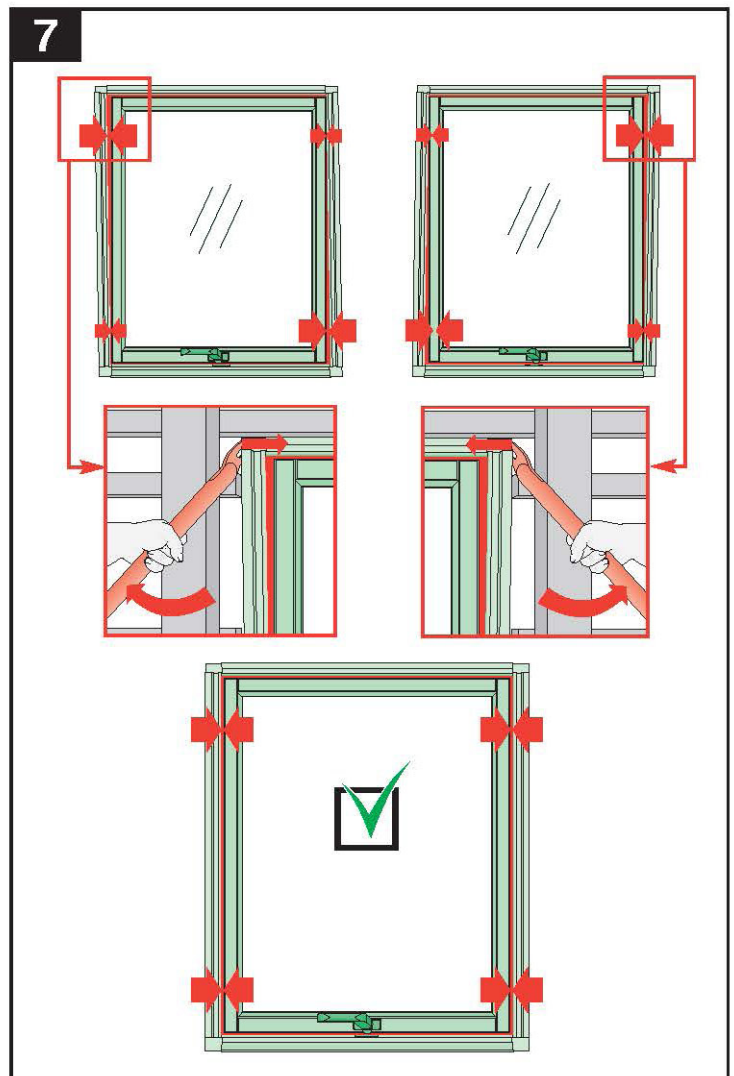
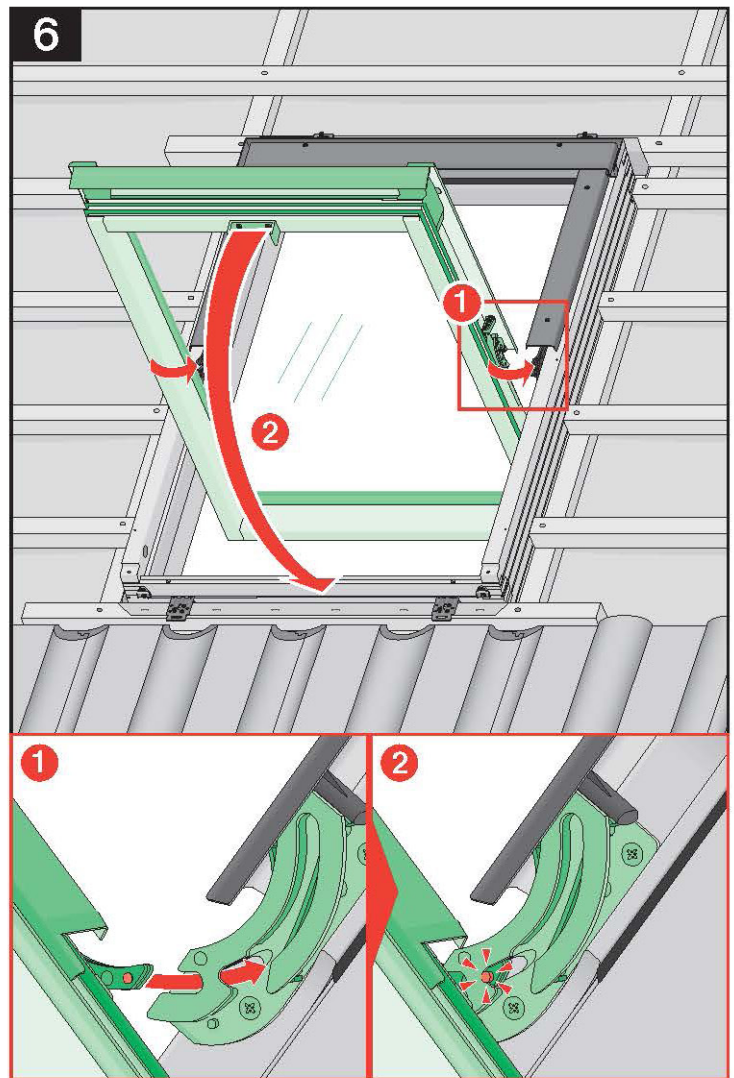
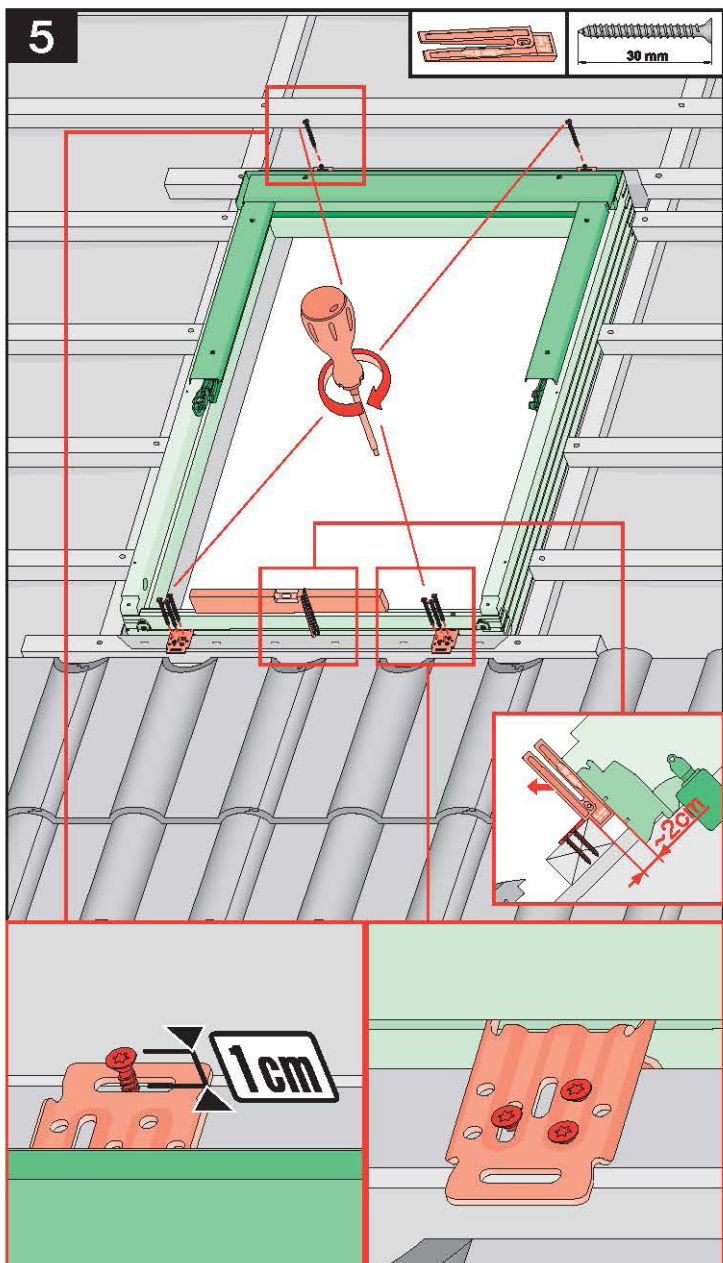
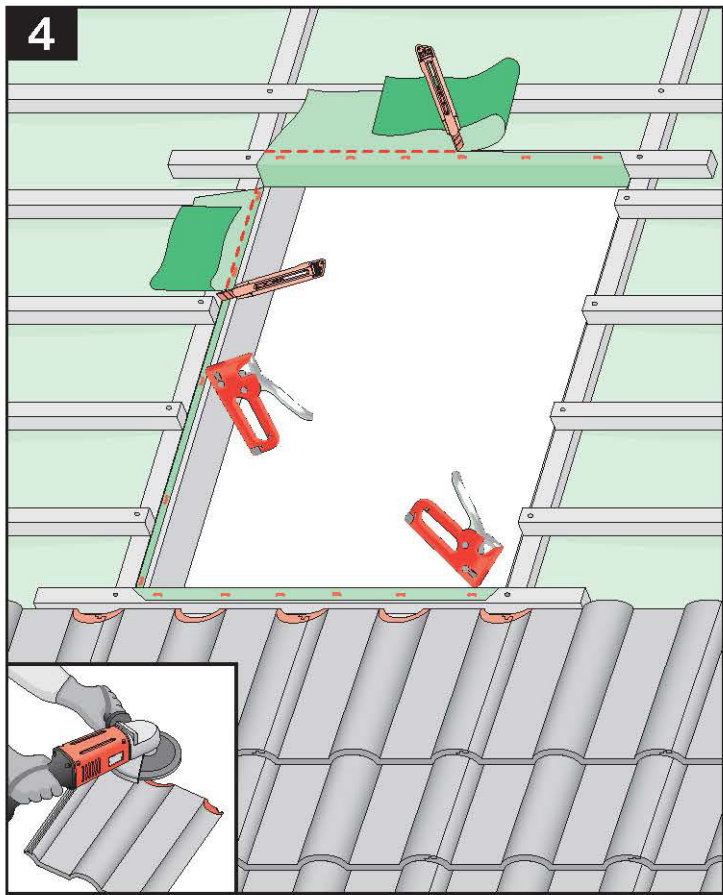
3



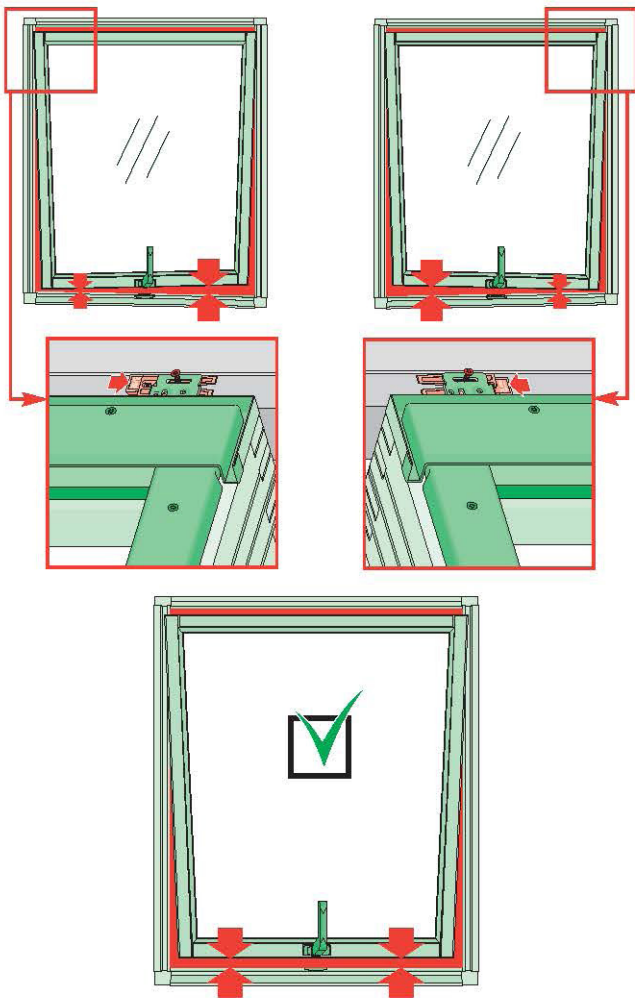
	max 5mm	ESN	0-2cm
		ESV	0-2cm

**ESN, ESV**

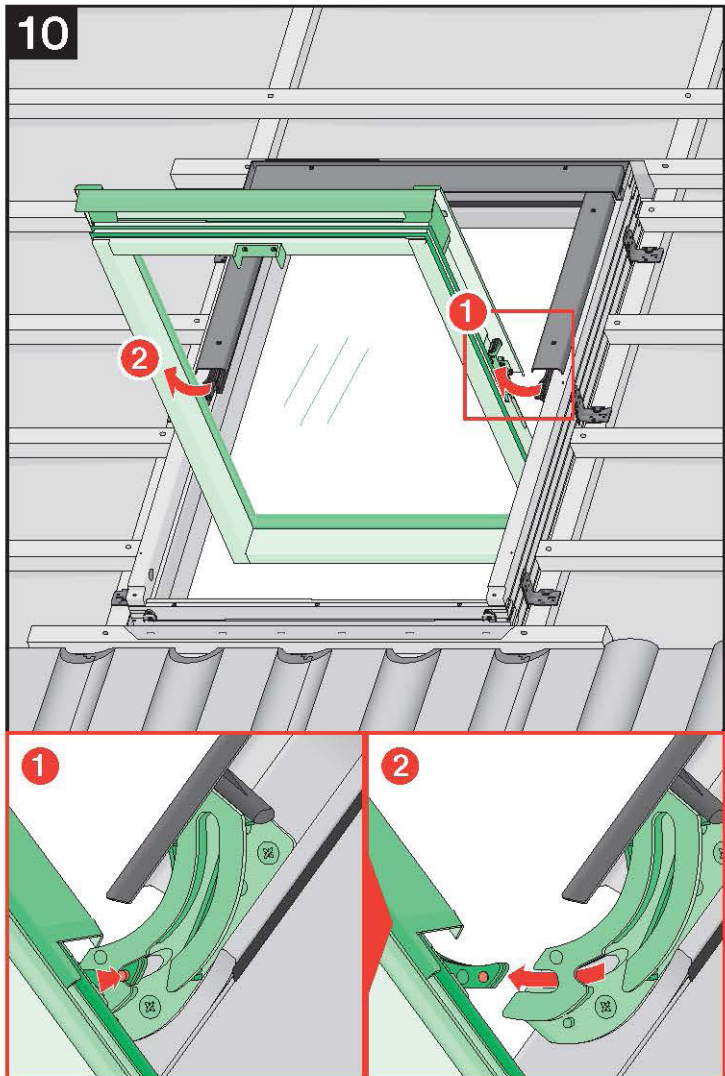




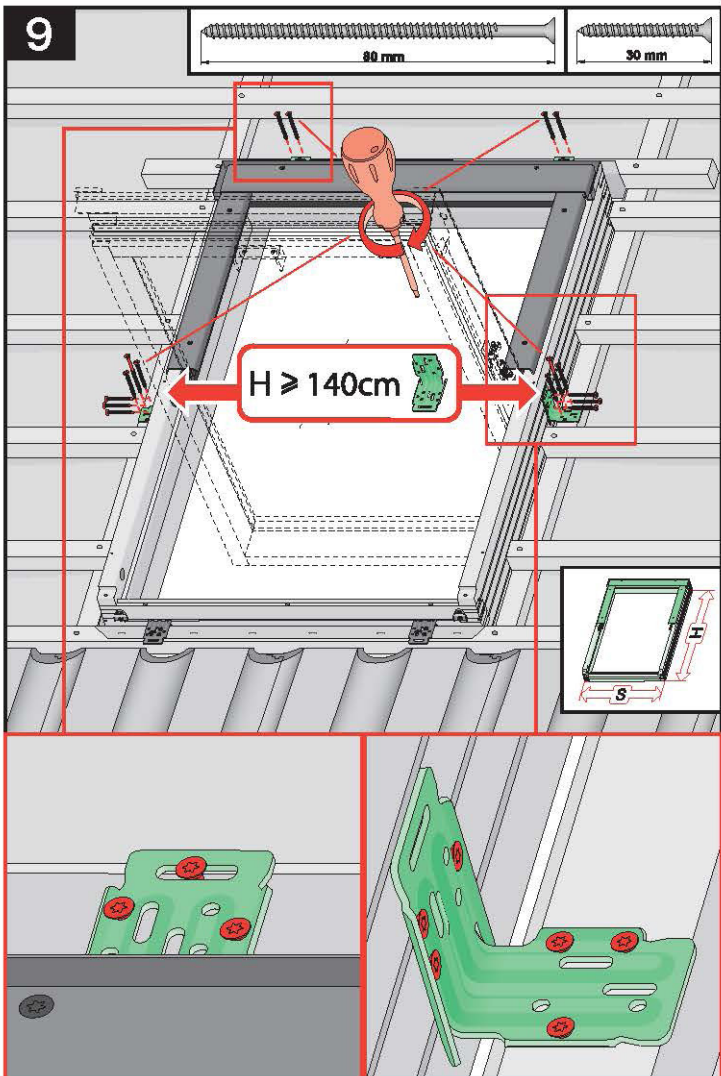
8



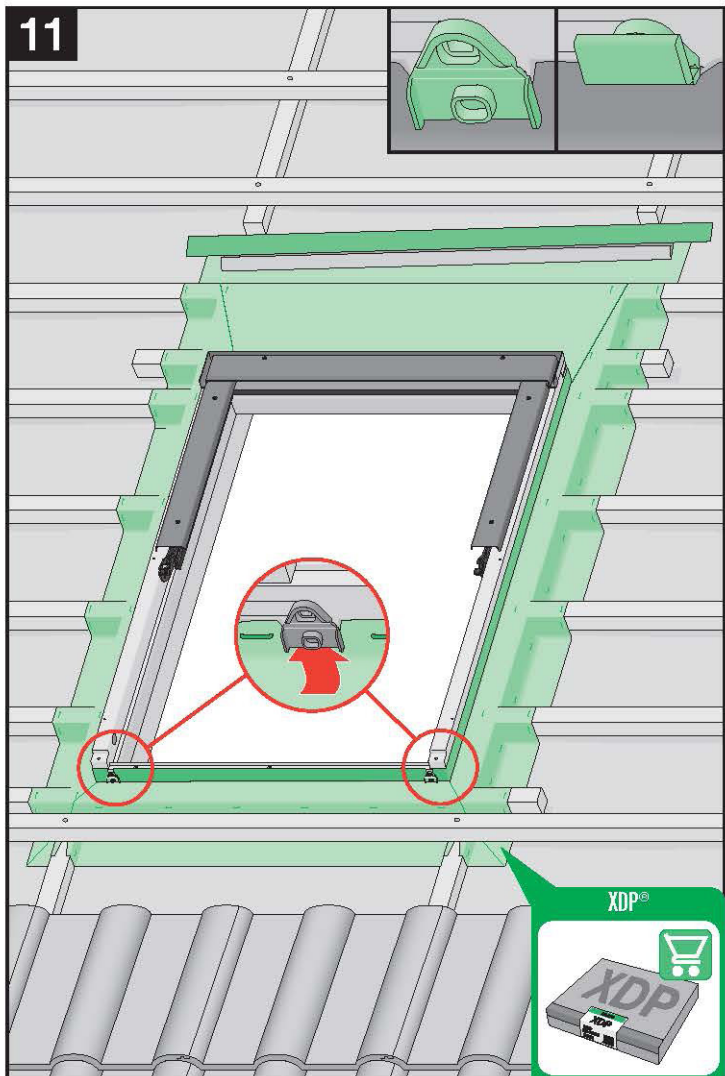
10



9

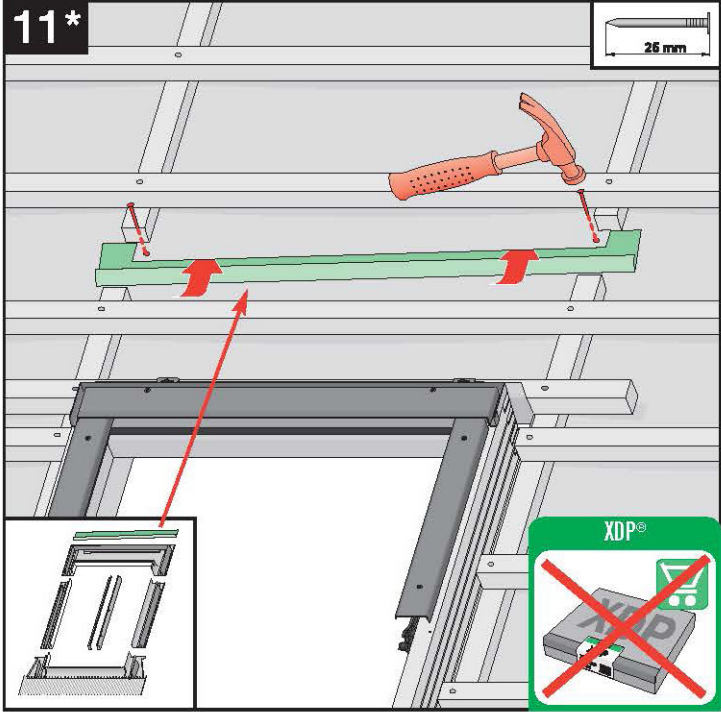


11

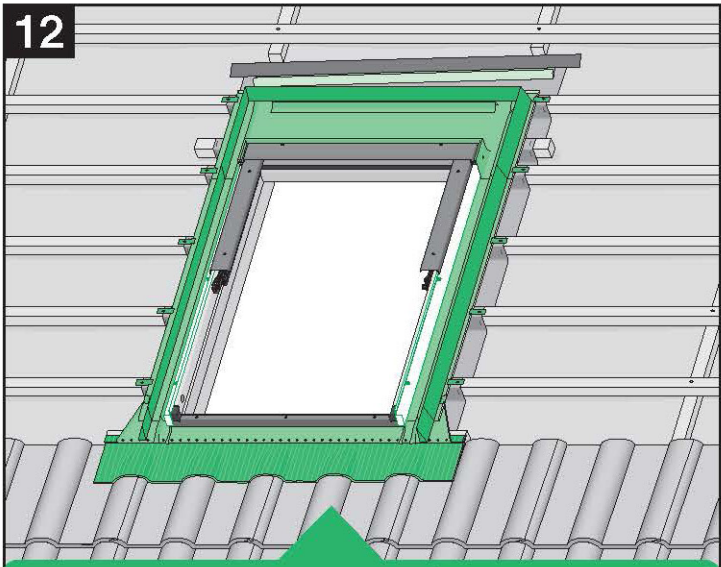


11\*

26 mm

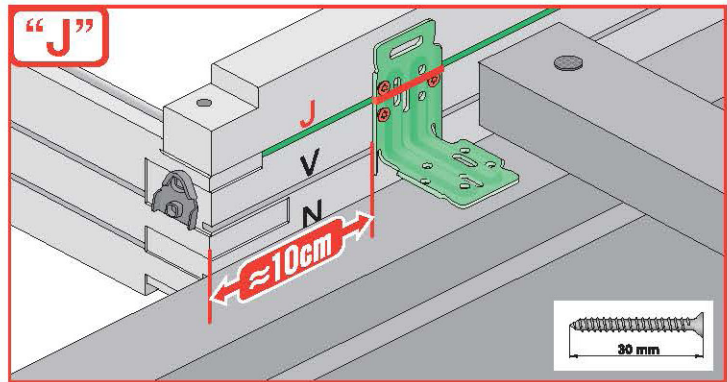
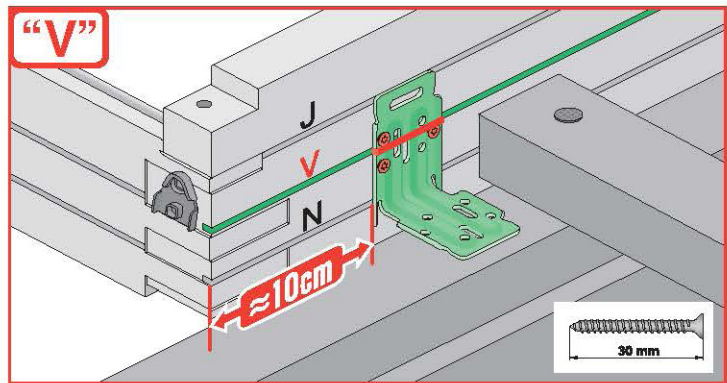
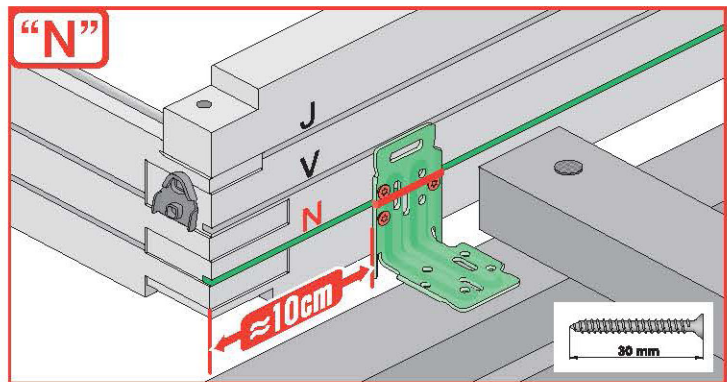
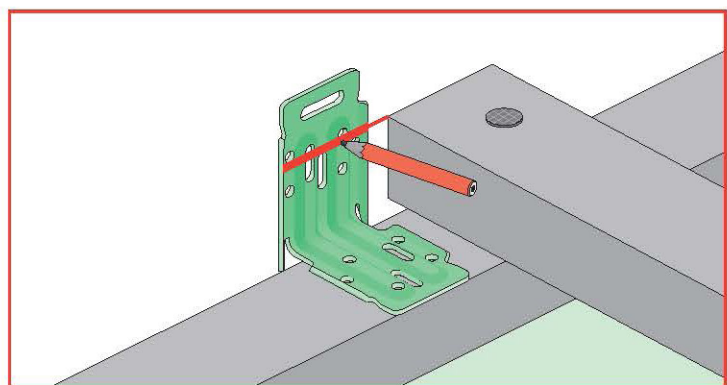
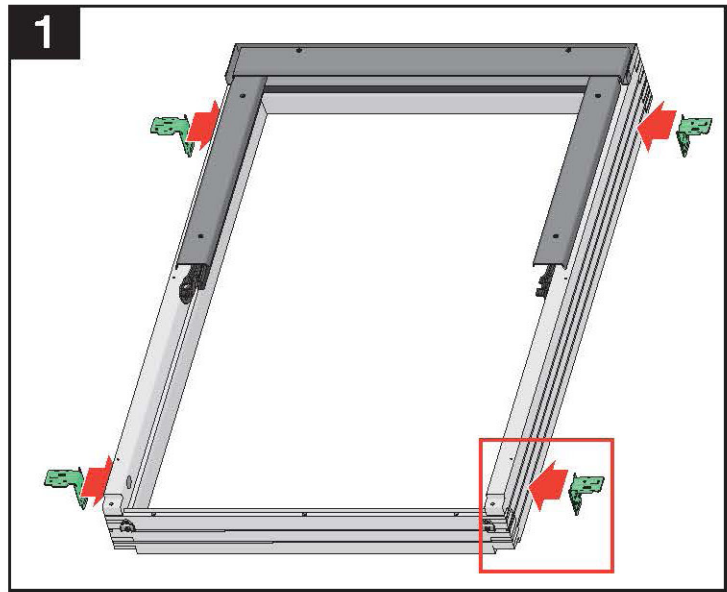
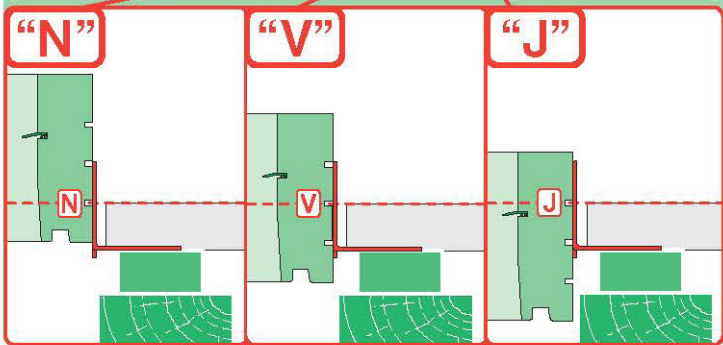
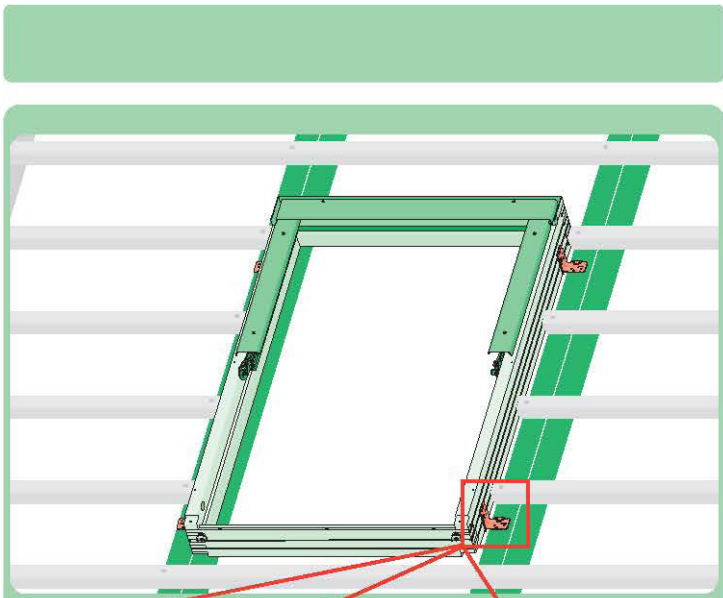


12



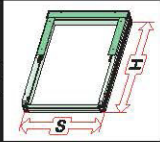
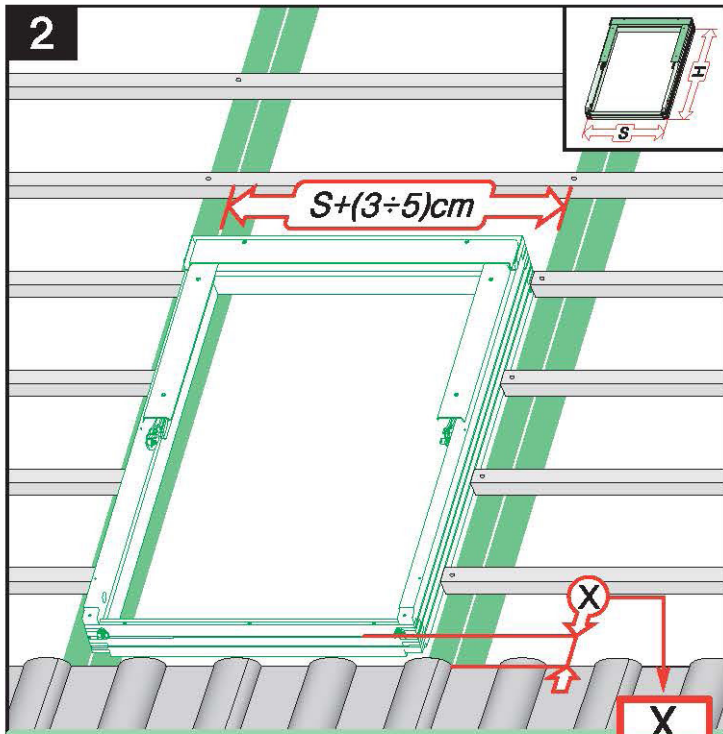
	EHN EHV		
	EZN EZV		
	ESN ESV		
	EGV		
	EPV		
	ELN ELV		
	EEN EEV		



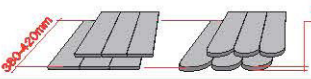
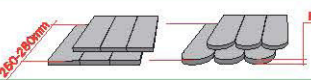
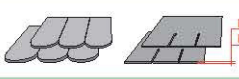





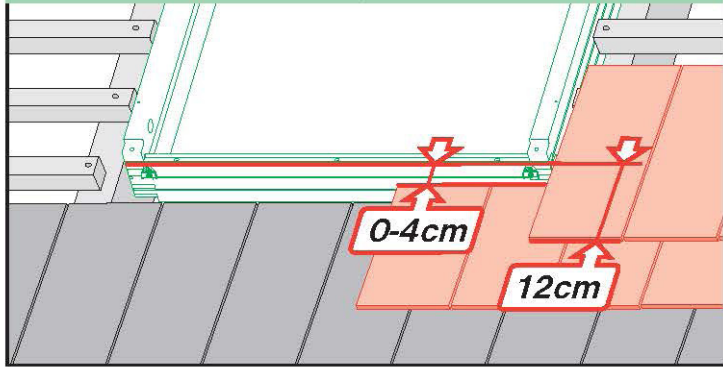
	max 90mm	EHN		
		EHV		
		-	-	-
	max 45mm	EZN		
		EZV		
		EZJ		
	max 15mm (N) max 5mm (V) max 5mm (J)	ELN		
		ELV		
		ELJ		
	max 5mm	ESN		
		ESV		
		ESJ		

2

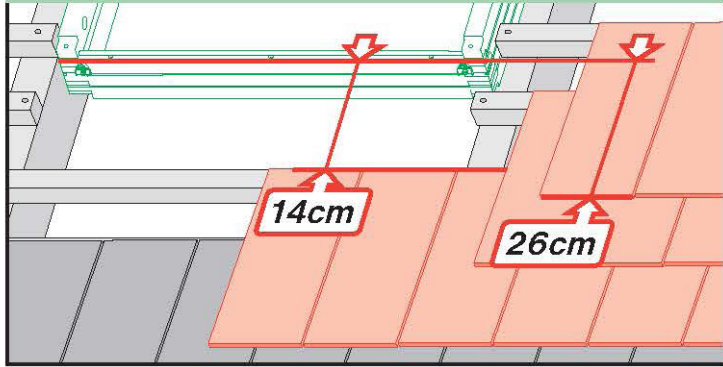


	max 90mm	EHN EHV	9-12cm 9-12cm
	max 45mm	EZN EZV EZJ	8-10cm 8-10cm 20cm
	12-16mm	EGV	6cm
	max 18mm	EPV	8cm
	max 5mm (V, J) max 15mm (N)	ELN ELV ELJ	0-4cm 0-4cm 14cm
		EEN EEV EEJ	0-4cm 0-4cm 14cm

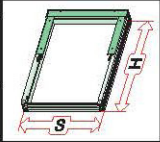
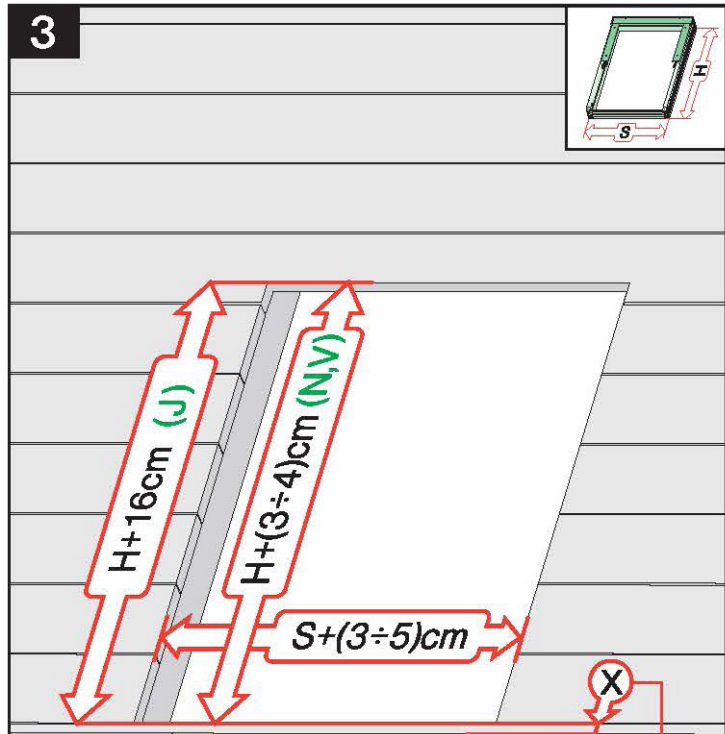
ELN, ELV




ELJ

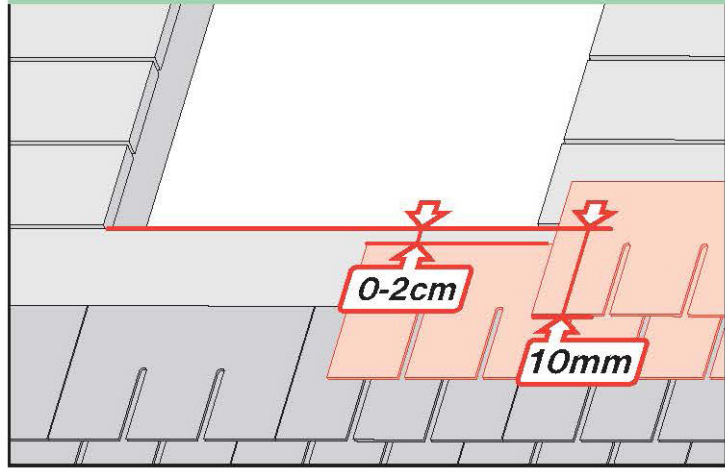


3

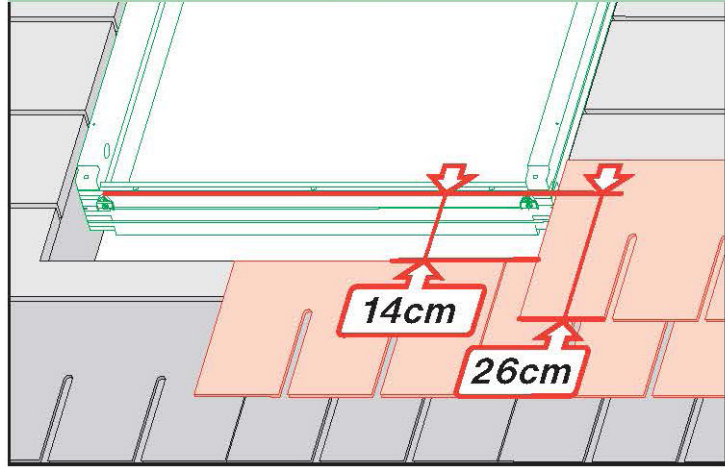


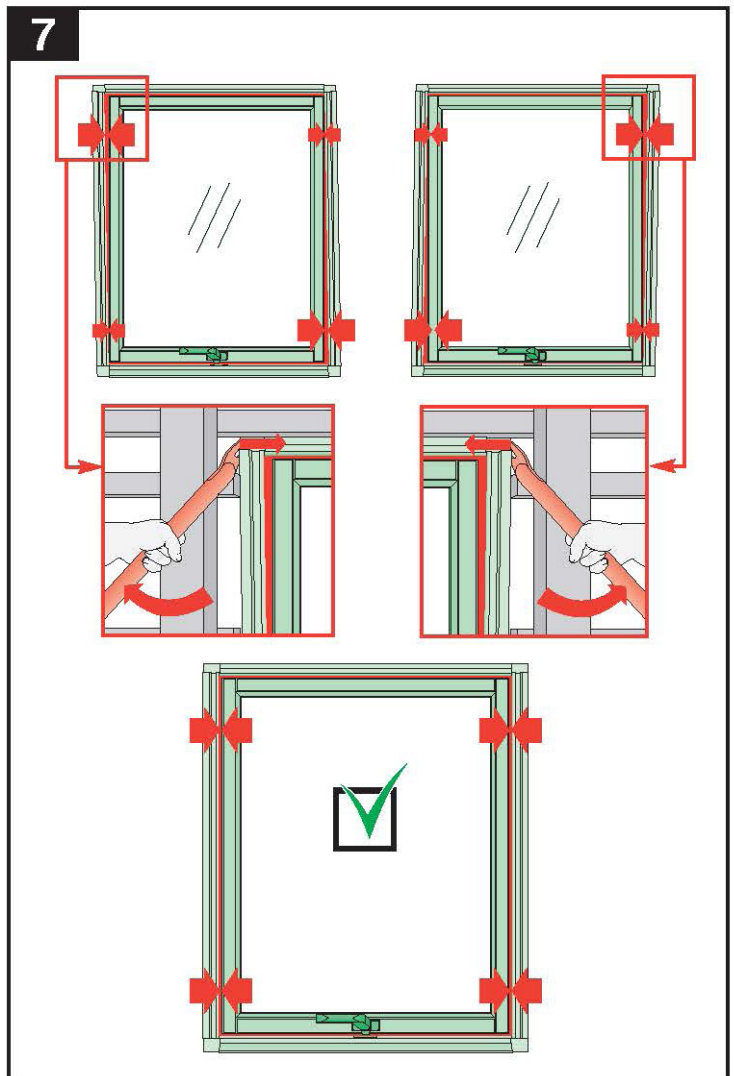
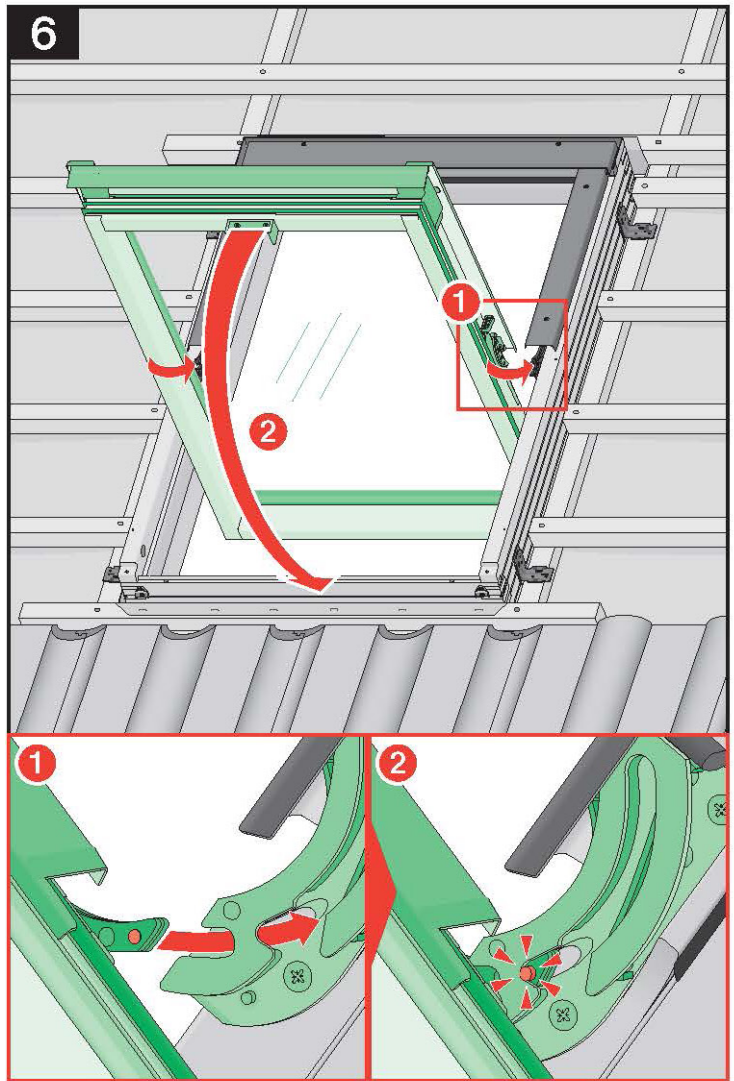
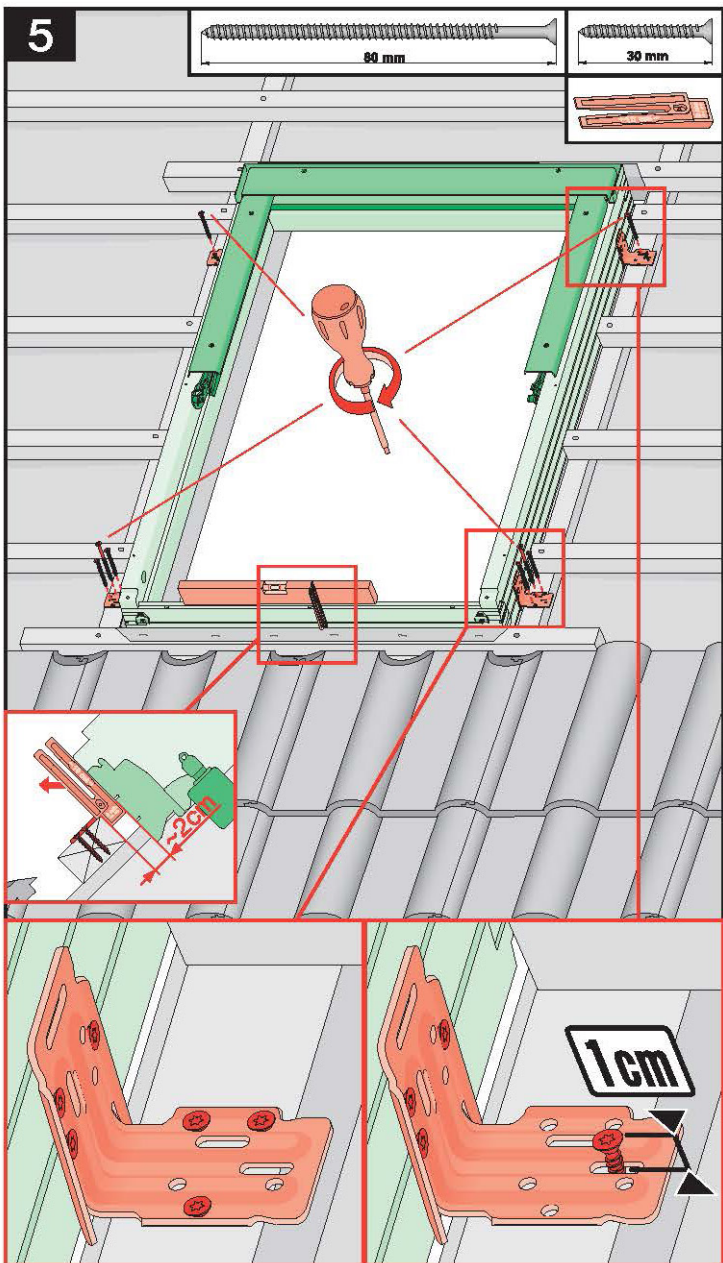
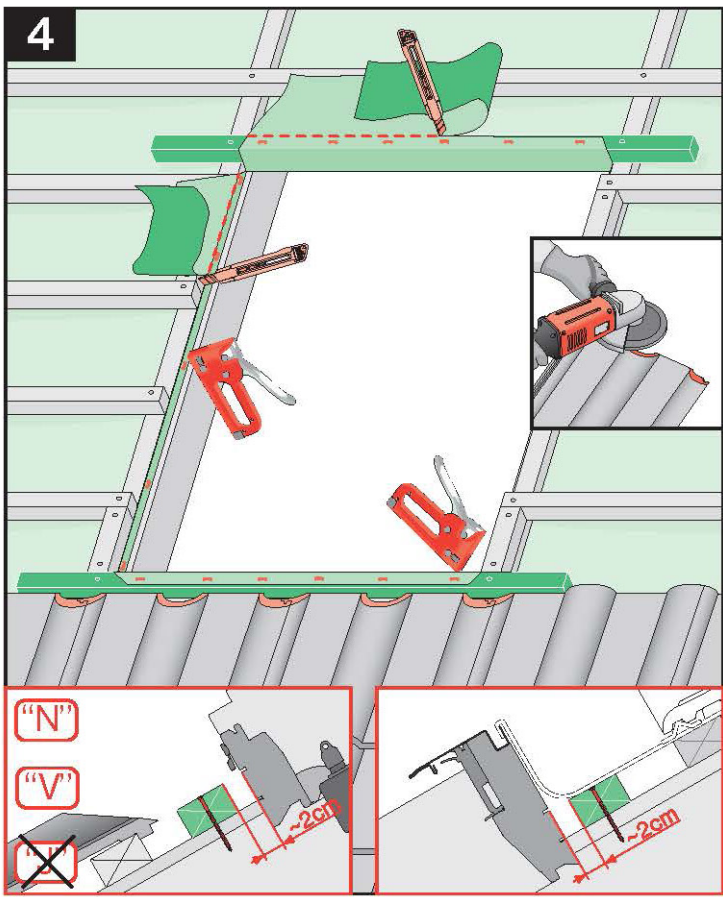
	max 5mm	ESN ESV ESJ	0-2cm 0-2cm 0cm
---	---------	-------------------	-----------------------

ESN, ESV

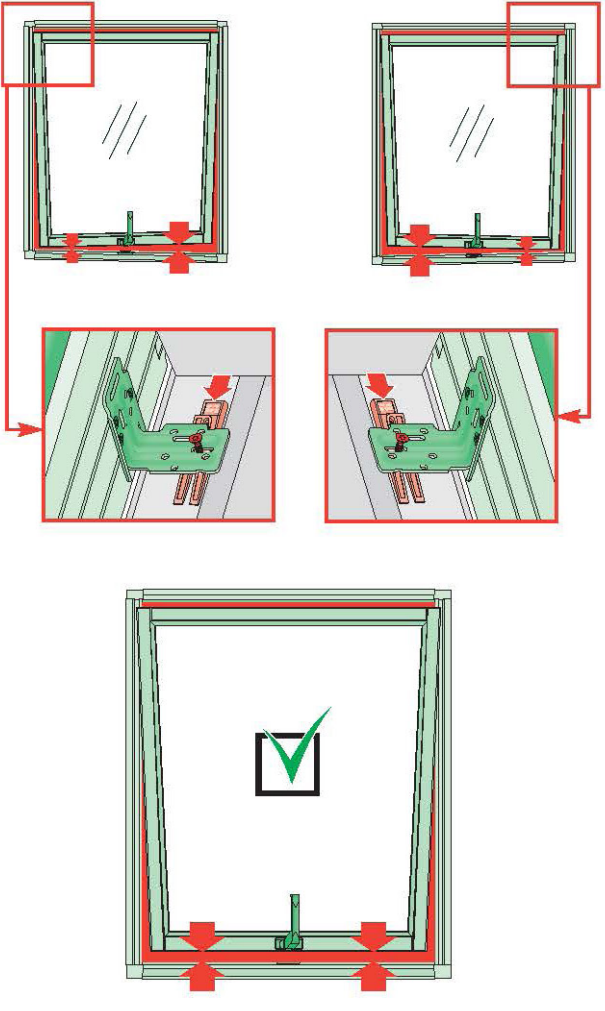


ESJ

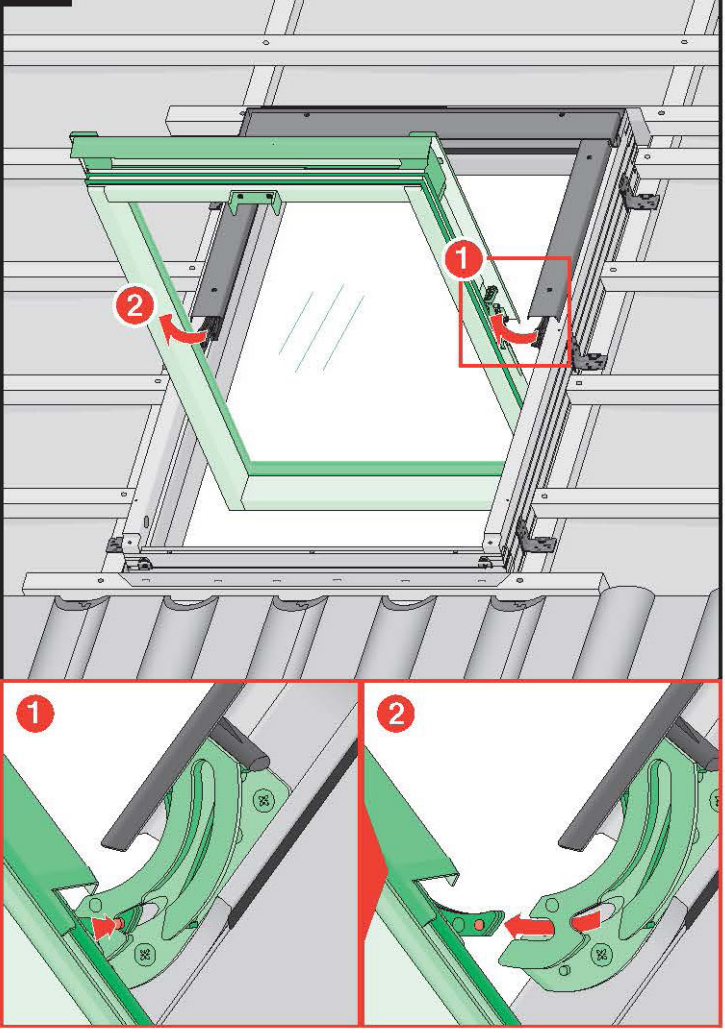




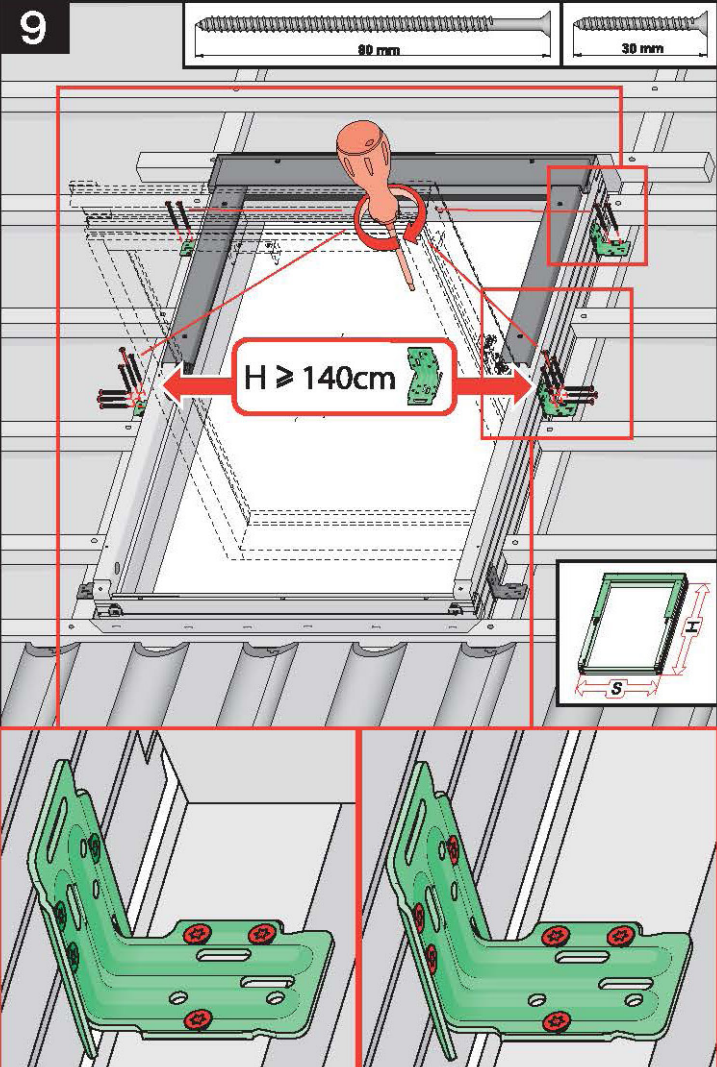
8



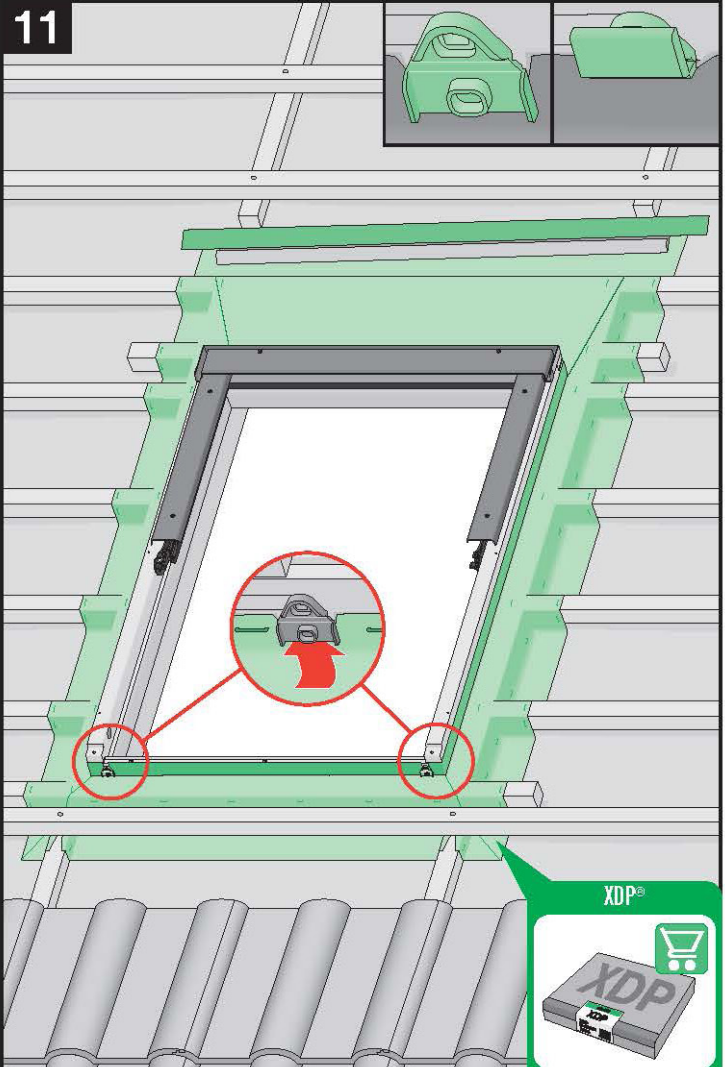
10



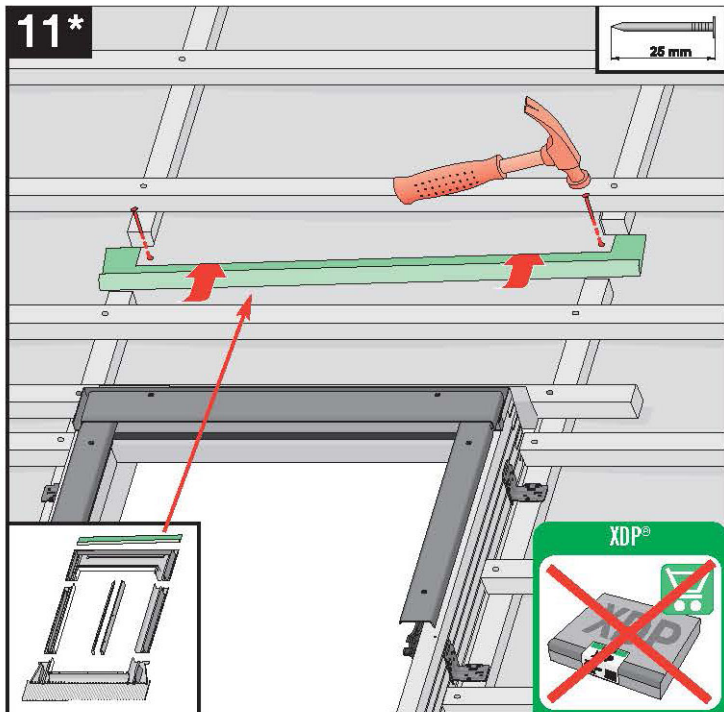
9



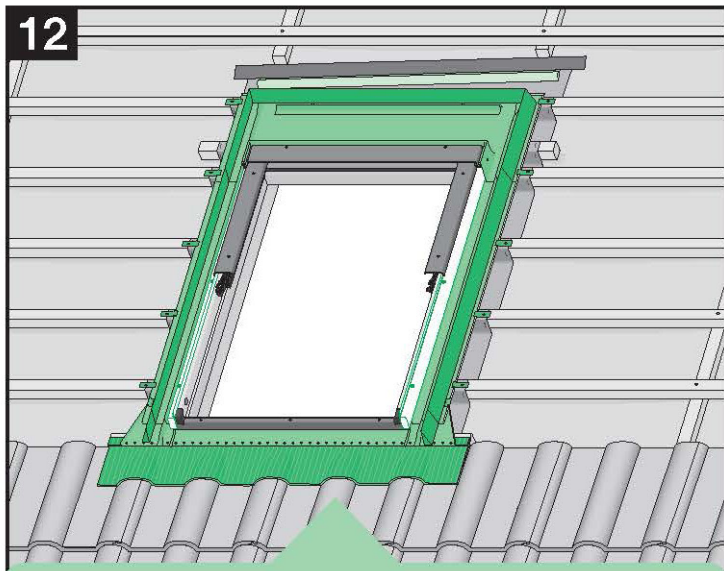
11



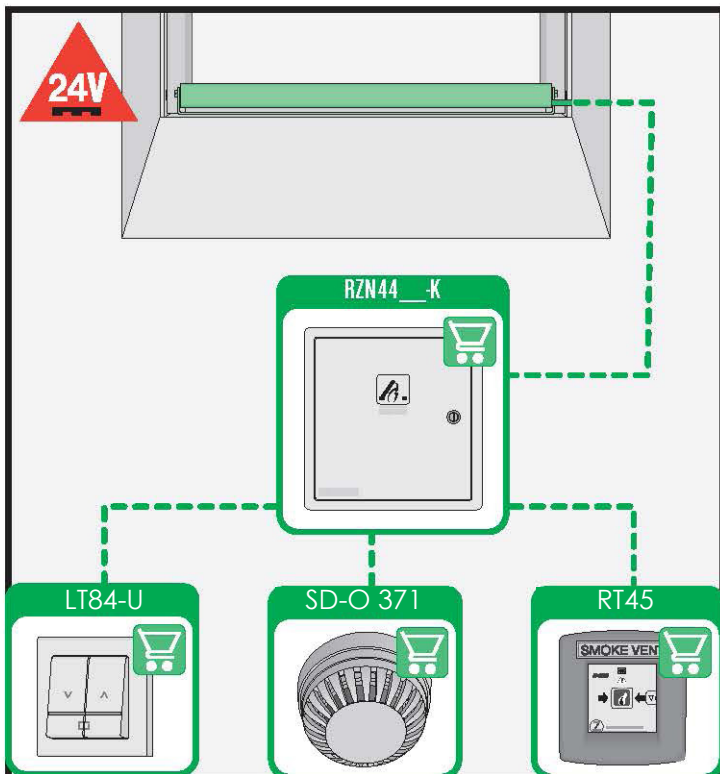
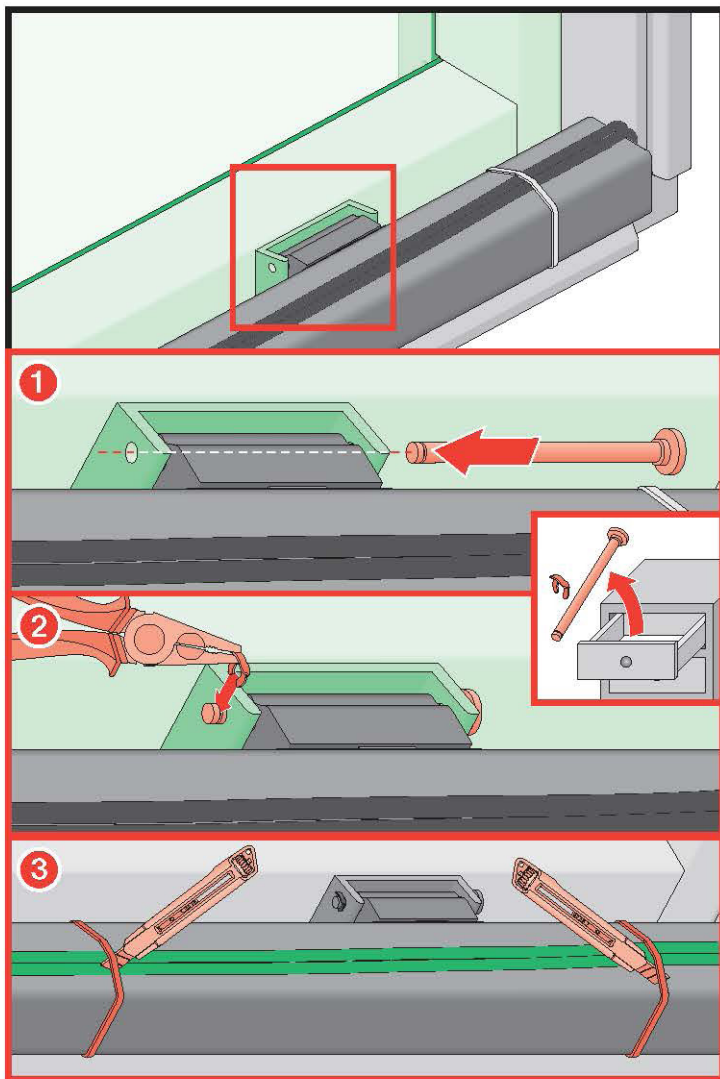
11\*



12



	max 90mm	EHN EHV		
	max 45mm	EZN EZV EZJ		
	max 5mm	ESN ESV ESJ		
	12-16mm	EGV		
	max 18mm	EPV		
	max 5mm (V) max 15mm (N)	ELN ELV ELJ		
		EEN EEV EEJ		



<b>CZ</b>	výrobce ani prodejce nenesou žádnou odpovědnost za nedodržení písmenných požadavků zákona, sávacích předpisů a bezpečnostních požadavků uživatelům výrobků, architektem, montážním nebo vlastním bednou.	<b>NL</b>	De fabrikant en verkoper zijn niet aansprakelijk voor gevolgen bij het niet opvolgen van bouwvoorschriften, bouwbesluiten en veiligheidsvoorschriften door de gebruiker van het product, de architect, de installateur of de eigenaar van het gebouw.
<b>DE</b>	Hersteller und Verkäufer übernehmen keine Haftung für Nichtbeachtung entsprechender Rechts- und Bauvorschriften sowie Sicherheitsanforderungen seitens Produktbenutzer, Architekten, Monteure oder für bauseitige Missstände.	<b>PL</b>	Producent i Sprzedawca nie ponoszą żadnej odpowiedzialności za nieprzejęcie stosownych przepisów prawa, przepisów budowlanych i wymogów bezpieczeństwa przez użytkowników produktów, architektów, monterów, właścicieli budynków.
<b>ES</b>	El fabricante y el vendedor no tienen ninguna responsabilidad por el incumplimiento de la ley vigente, normas de construcción y exigencias de seguridad por parte del usuario del producto, arquitecto, instalador o el propietario del edificio.	<b>PT</b>	O fabricante e o vendedor não tem nenhuma responsabilidade pelo não cumprimento da lei, códigos de construção e as exigências de segurança por parte do usuário do produto, arquiteto, instalador ou proprietário do edifício.
<b>FR</b>	Le fabricant et le vendeur ne peuvent être considérés comme responsables de ne pas respecter les lois applicables, les règlements sur les bâtiments et les exigences de sécurité par l'utilisateur du produit, l'architecte, l'installateur ou le propriétaire du bâtiment.	<b>RO</b>	Nici producătorul, nici distribuitorul nu își vor asuma niciun fel de răspundere pentru nerespectarea legilor în vigoare, a legilor din domeniul construcțiilor sau a măsurilor de siguranță impuse de autoritățile competente, arhitecților, montajului sau proprietarilor de clădiri.
<b>GB</b>	Manufacturer and seller shall bear no liability for failure to comply with the applicable laws, building codes and safety requirements by the user of the product, architect, fitter or owner of the building.	<b>RU</b>	В случае несоблюдения архитектором, монтажником или владельцем здания строительных правил и норм безопасности ответственность с производителя и продавца снимается.
<b>HU</b>	A gyártó és a kereskedő nem vállal semmilyen felelősséget a vonatkozó jogszabályok, építési és biztonsági előírások, építész, beépítőmester vagy felhasználó által be nem tartásáért.	<b>SK</b>	Výrobca a predávca nenesú žiadnu zodpovednosť za nedodržanie príslušných ustanovení zákona, sávacích predpisov a bezpečnostných požiadaviek užívateľom výrobkov, architektom, montážnym alebo majiteľom objektu.
<b>IT</b>	Il fabbricante e il rivenditore non potranno essere ritenuti responsabili per il mancato rispetto, da parte dell'utente del prodotto, del progettista, dell'installatore o del proprietario dell'edificio, delle leggi vigenti, nonché dei regolamenti edili e di quelli relativi alla sicurezza.		